



The most accessible hotel to the Great Barrier Reef, located on the marina in the heart of Cairns, the five-star Shangri-La The Marina, Cairns is the ultimate place to stay for business or pleasure.

Experience the warmth of our genuine Australian hospitality at the Shangri-La The Marina, Cairns. Prominently situated on the marina, providing guests with both a direct gateway to the reef, tours and attractions and the perfect Cairns getaway.

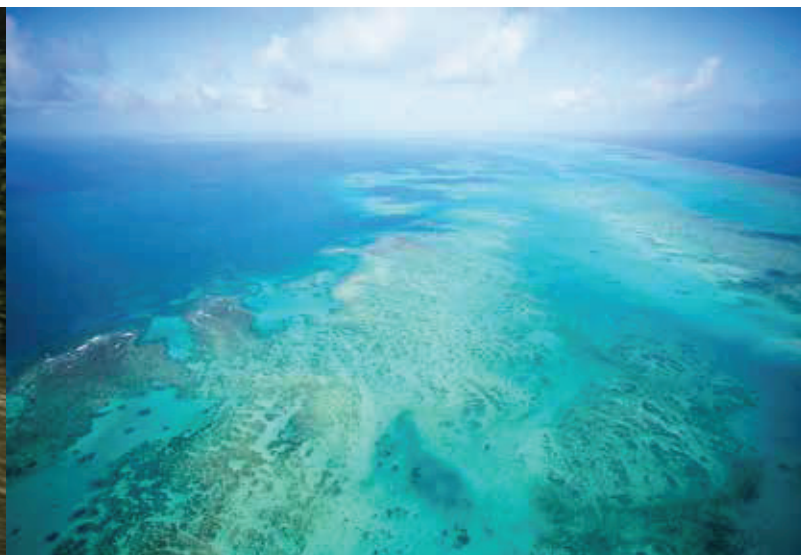
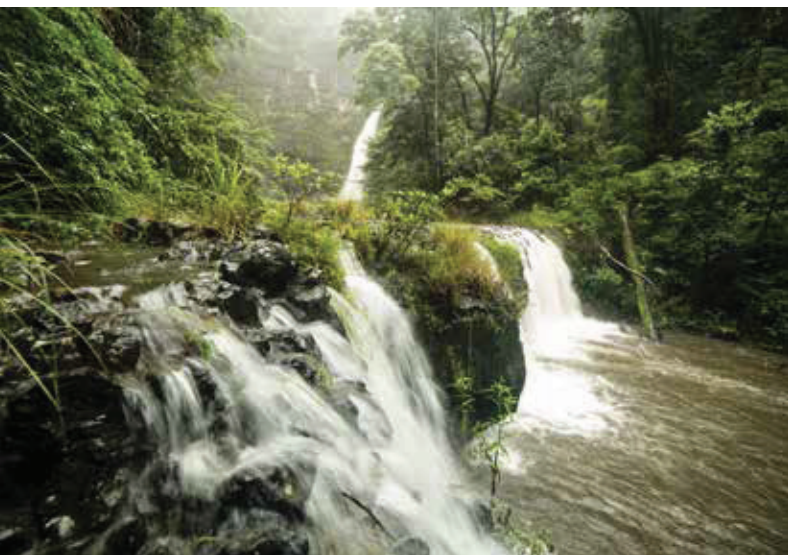
Whether taking a refreshing swim in our private pool, surrounding yourself with the gentle lapping of waves against the boats; taking in the breathtaking views of the marina and mountains or savouring the taste of the contemporary Australian table at The Backyard Restaurant & Bar, the Shangri-La The Marina, Cairns, is guaranteed to stimulate all your senses.

Adjacent to Reef Fleet Terminal and esplanade; 5 minute walk to city centre; 10 minute walk to Cairns Convention Centre; 10 minute drive to Cairns Domestic and International Airports.



TROPICAL LOCATION

With two World Heritage Listed areas at its doorstep, the Great Barrier Reef and Daintree Rainforest, Cairns offers numerous attractions. There are a range of tour operators offering a variety of experiences; from adrenaline-pumping activities such as rafting, bungee jumping and four wheel drive tours to the more sedate, river cruises and rainforest walks. There's also a world-class mountain bike trails and a golf course located approximately 25 minutes from the hotel. Adjacent to the hotel you will find a helipad that can transport you to the Great Barrier Reef in minutes.



SERVICES AND FACILITIES

- Airport transfers can be arranged
- Tour desk, Car rental, taxis and limousine services
- Undercover, secure car parking facilities
- Same-day laundry and dry cleaning
- Foreign exchange services
- Safe deposit box
- Lobby Shop
- Shopping Centre in the same building- The Pier

HORIZON CLUB AND LOUNGE

Horizon Club guests enjoy Shangri-La's unique spirit of hospitality, exclusive amenities and access to the private lounge where a light buffet breakfast is served, all day beverages and evening canapés can be enjoyed.

RECREATION FACILITIES

- Outdoor swimming pool and pool bar
- Children's pool
- Table Tennis
- 24-hour gymnasium

BUSINESS CENTRE

We offer full range of business support including: printing, photocopying, courier and facsimile services. For guests' convenience a private meeting room is also available as well as a selection of computers stations.



FREE WIFI ~ ADJACENT TO REEF FLEET TERMINAL



ACCOMMODATION

The hotel comprises of 255 spacious guest rooms and suites, all with balconies and most with water views. All guest rooms have been renovated and have a modern sophisticated appeal with nautical accents, bringing the outdoor in. Guest rooms have spectacular views over Marlin Marina, Trinity Bay, Cairns City, rainforest gardens or the hotel's sparkling pool.

Free Wi-Fi is available throughout the entire hotel.

GUEST ROOM FEATURES

- All rooms have a balcony or courtyard
- "Backyard Eats" - In room catering delivery; available for breakfast from 7am-10.30am; and all day dining from 11.00am-10.00pm;
- Electronic safe
- Hairdryer
- Mini-bar
- Tea and coffee making facilities
- Iron and ironing board



DELUXE ROOMS

Deluxe Rooms are generously sized and feature a balcony or courtyard. City or Garden Views are available. Availability: 98 rooms. Space: 32.5sqm/350 sqf.

DELUXE SEA VIEW ROOMS

Deluxe Sea View Rooms feature ocean and esplanade view and a balcony. Availability: 51 rooms. Space: 32.5sqm/350 sqf.

EXECUTIVE MARINA VIEW ROOMS

Executive Marina View Rooms exude luxury and contemporary elegance with stunning uninterrupted views of Marlin Marina and rainforest clad mountains. Availability: 48 rooms. Space: 32.5 sqm/350 sqf.



HORIZON CLUB ROOMS & SUITES

Our premium Horizon Club Rooms and Suites boast spacious, contemporary design and magnificent eye-level marina views. Oversized balconies, a view from the bathtub and full Horizon Club Lounge access set new levels of luxury.

Availability: 32 rooms and 4 suites. Room Space: 56 sqm/ 602 sqf. Suite Space: 74.5sqm/796sqf.

EXECUTIVE SUITES

With large balconies and spacious lounge areas, Executive Suites provide the perfect space for indulgence in ocean side living. Availability: 10 suites. Suite Space: 49.5 sqm/533 sqf.

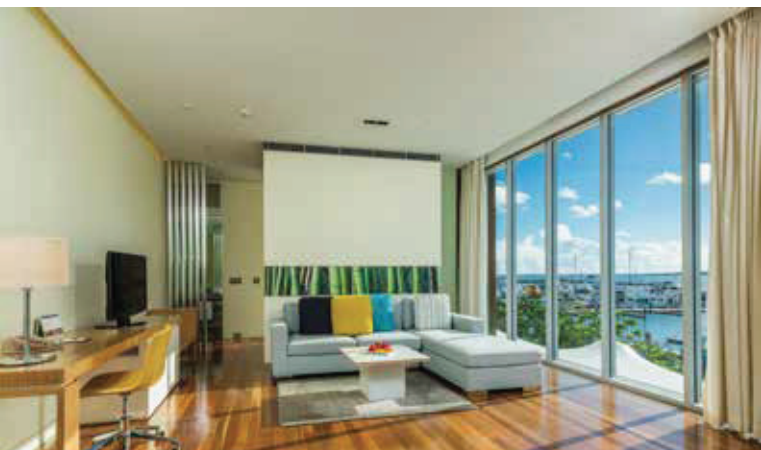
ONE BEDROOM SUITES

These extra spacious suites offer city and bay views from the balcony, a separate bedroom and a large bathroom with separate shower and bath. Availability: 10 suites. Suite Space: 58 sqm/625 sqf.

THE ROYAL SUITE

Offering outstanding levels of elegance, sophistication and luxury - The Royal Suite provides sweeping views of the Marlin Marina. The suite features a luxury bedroom with marble ensuite and spa bath, separate lounge room with large dining area, fully equipped butler kitchen and wrap around balcony. Guests also enjoy full Horizon Club Lounge benefits.

Suite Space: 140 sqm / 1,506 sqf.



THE BACKYARD RESTAURANT & BAR

The Backyard has a vibrant, funky feel with a distinct local North Queensland personality. The cuisine epitomizes the contemporary Australian table featuring dishes designed to utilise local produce. Energetic and laid back during the afternoon - upbeat tempo and lively at night time. With a choice of airy seating areas guests can enjoy uninterrupted views of the waterfront. The outdoor bar is the service point of the garden area featuring a custom made BBQ and smoker, giving customers a unique outdoor experience year round; perfect for social functions.

The Backyard offers inside and outdoor seating with various service options;

- o The Restaurant - A la carte modern Australian
- o The Bar and Garden- Bar service, bar nibbles, BBQ plates and unique container bar
- o The Kiosk - Barista coffee and specialty teas

Customised Sole-use events for up to 316 people

FUNCTION VENUES

Shangri-La The Marina, Cairns offers exceptional conference facilities with spectacular views and an experienced team of professional event organisers. The hotel boasts sixteen function rooms, each with a different combination of indoor and outdoor spaces, which provide perfect venues for large or small, business or social occasions. All spaces have large windows providing natural light, with marina views and mountain views.

EVENT CENTRE

The Shangri-La Event Centre is the only dedicated event centre in Cairns, with separate guest access and purpose-built atrium. This space is as sophisticated and elegant as it is practical for guests.

TRINITY ROOMS 1 & 2

The picturesque Trinity Rooms overlook Cairns' spectacular Trinity Bay. The rooms feature a large outdoor balcony and modern interiors.

LAGOON ROOM

The elegant Lagoon Room offers views of Cairns City and the surrounding mountain ranges, as well as a private entrance.

MARLIN ROOMS 1, 2 & 3

The Marlin Rooms are also part of the events centre, boasting large windows and flooded with natural light.

BALLROOM

Combining luxurious style with versatility and state-of-the-art technologies, the Ballroom is the perfect place to celebrate your grand occasion.

MARINA ROOMS 1, 2 & 3

Facing the stunning Marlin Marina these function rooms are filled with natural light by day and enchanted by glittering night lights in the evening.

FLEET ROOMS

Featuring floor to ceiling windows these rooms are filled with natural light. Facing south they can be used as one large area or split into two separate venues.

TERRACE ROOM

Offers a distinct colonial feel with timber floors and high ceilings spilling out onto the poolside terrace.

POOLSIDE TERRACE

Surrounded by lush tropical gardens and under the cover of a permanent sail marquee, our Poolside Terrace provides a true North Queensland atmosphere.



RESTAURANTS AND BARS

Restaurants / Bars	Capacity	Location	Cuisine
The Backyard Restaurant	72	Ground Level	Modern Australian
The Backyard Bar	194	Ground Level	Pub Classics
The Backyard Garden	150	Ground Level	Barbeque and Finger Food
The Kiosk	20	Ground Level	Coffee and Pastries

BANQUET AND CONFERENCE ROOMS

Venue	Cocktail	Cabaret	Capacity Theatre	Banquet	Classroom	U-Shape	Dimensions (m)	Area (m²)	Ceiling Height (m)
Events Centre Meeting Rooms									
Trinity Room 1	75	64	125	85	55	35	7.7 x 15.3	117	3.4
Trinity Room 2	75	64	125	85	55	35	7.7 x 15.2	117	3.4
Trinity Room 1 & 2	150	128	240	170	110	70	7.7 x 30.7	234	4.45
Pre-Function (Trinity Room)	175	•	•	•	•	•	•	167	•
Lagoon Room	100	64	80	50	60	30	7.7 x 16.2	125	3.4
Pre-Function (Lagoon Room)	150	•	•	•	•	•	•	182	•
Marlin Room 1	140	64	110	80	50	30	9.3 x 12	111	3.4
Marlin Room 2	60	32	50	40	25	15	9.3 x 5.8	54	3.4
Marlin Room 3	85	48	70	60	35	25	9.3 x 8.4	78	3.4
Marlin Room 1,2 & 3	300	160	300	170	115	62	9.3 x 26.6	247	3.4
Marlin Room 1 & 2	170	96	160	120	75	40	9.3 x 17.8	165	3.4
Marlin Room 2 & 3	150	80	125	100	60	35	9.3 x 14.2	132	3.4
Pre-Function (Marlin Rooms)	165	•	•	•	•	•	•	160	•
Level 1									
Terrace Room	130	64	50	80	•	•	12.5 x 17.6	220	•
Poolside Terrace	500	•	•	320	•	•	•	320	•
Fleet Room 1	80	24	80	30	48	20	5.4 x 14.7	75	2.8
Fleet Room 2	70	24	60	30	40	20	5.9 x 14.7	65	2.8
Fleet Room 1 & 2	130	56	140	70	70	25	11.3 x 14.7	140	2.8
Level 2									
Shangri-La Ballroom A	200	80	200	100	70	30	12.8 x 12.8	153	4.5
Shangri-La Ballroom B	200	80	200	100	70	30	12.8 x 12.8	153	4.5
Shangri-La Ballroom A & B	400	192	400	200	150	50	24 x 12.8	306	4.5
Pre-Function (Ballroom)	150	•	•	•	•	•	5.4 x 22.8	120	4.1
Marina Room 1	40	24	40	30	30	10	6 x 7.5	45	3
Marina Room 2	40	24	40	30	30	10	6 x 7.5	45	3
Marina Room 3	40	16	40	20	20	10	6 x 7.5	30	3
Marina Room 1, 2 & 3	100	64	110	80	50	30	18 x 7.5	120	3
Marina Room 1 & 2 or 2 & 3	70	48	90	60	35	20	12 x 7.5	75	3
Pre-Function (Marina Rooms)	150	•	•	•	•	•	•	•	3